



ATEX site and stand-alone data logger

SM@RT LOGGER

Flow computers

Measuring systems

Remote Terminal Unit

Supervisory system

More than a single remote terminal unit, SM@RT LOGGER is a global telemetry solution made in France. The SM@RT LOGGER package includes: a field device and a web server application (MyMeci Cloud).

Using MyMeci Cloud, the operator can manage all the SM@RT LOGGER, monitor all the plants and collect all the data recorded on the field. With an ultra low energy management, the SM@RT LOGGER with its very long life battery allow a permanent site accessibility.

The PC application offers to the operator a very easy data exploitation on site through a wireless communication. A smartphone or a tablet application will be available in the future. The SM@RT LOGGER display completes the user interface.

A greater autonomy

Ultra low power design

GSM / GPRS / 2.5G /... modem ultra low power.
Very quick data exchange with the sensors.
A wise choice of electronic components.

Power supplies adapted to your specificities

Simple internal battery: more than 10 years battery life with daily communication
1S external batteries pack « long life »: more than 3 years battery life with permanent communication.

Evolutionary and secured wireless solution

GSM / GPRS / 2.5G /... : remote access

Removable internal modem for a quick adaptation to the new technologies.
Advanced encryption (AES 128 bits) used to the data exchanged from SM@RT LOGGER to MyMeci Cloud to secure data transfer.

Bluetooth 4.0 Low Energy : local access

No physical connection on site.
Integrated user management for the Bluetooth access.
Very low energy consumption.

Easy and quick commissioning

Site equipment with weather resistant enclosure

Industrial environment design.
Authorized in an ATEX area.
Terminal block accessible without tools thanks to new generation box.

Reduction of the operating costs

The SM@RT LOGGER conception reduces the on-site interventions. The amount of exchanged data is optimized. The installation costs are cheap because of the SM@RT LOGGER location (reduced wiring, no specific enclosure, etc.).

MyMeci Cloud: a friendly and opened web application

MyMeci Cloud: what is it ?

A web application useable with your web navigator to be installed directly on your server or available on MECI server.

MyMeci Cloud : its functions

A SM@RT LOGGER configurator.
A SM@RT LOGGER data concentrator.
A data formatting tool.
A software manager.
A gateway between computer systems.

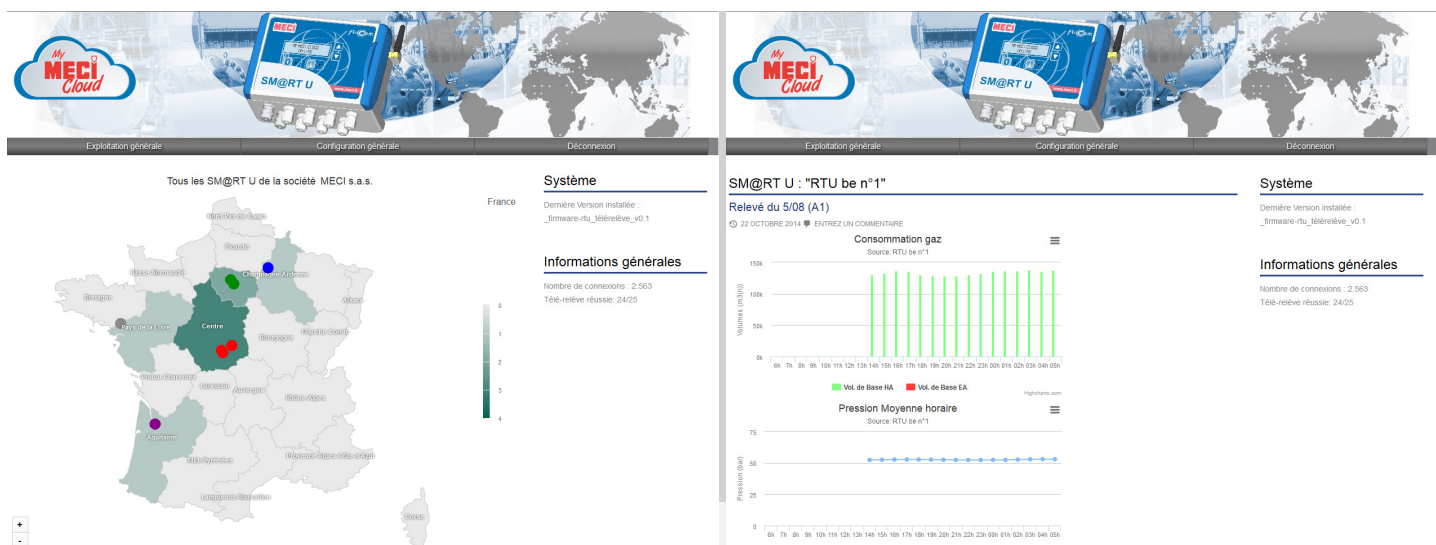
MyMeci Cloud: benefits

An easy and global management of your installation.
A stand alone solution without heavy investment.
Unlimited archiving.
Compatible system with all web navigators without specific software.

Technical data - ATEX site and stand-alone data logger

Model		SM@RT LOGGER
Functions	Remote reading	Collecting of the volume converter data
	Remote maintenance	A remote global management of SM@RT LOGGER (software and firmware upgrade, centralized management of configuration, events log, diagnostic, etc.).
	Operating	Customized web server (MyMeci Cloud) to collect, to format and to use SM@RT LOGGER data.
Equipment	Enclosure	Size : 202 x 186 x 90mm (included antenna and cable gland) Material : Polycarbonate Weight : 900g
	User interface	Alphanumerical display : 2 lines of 16 digits Can be customized Keyboard for local reading
	Buttons - Leds	Used to initiate or check Bluetooth or GSM / GPRS communications
	Digital inputs	7 contacts powered by SM@RT LOGGER for recording low-frequency flow and to calculate a volume that can be time-stamped (hourly, daily ...)
	Analog inputs	1 numerical pressure input (relative or absolute) 2 inputs customized for pressure and/or temperature
	Pressure	50 mbar (g), 500 mbar (g), 10 bar (g), 30 bar (g), 0.9-4.0 bar(a) , 2-10 bar (a), 4-30 bar (a), 20-100 bar (a)
	Communication	1 GSM / GPRS / 2.5G / ... 4 band multi-slot internal modem - class 10 1 Bluetooth 4.0 Low Energy link dedicated for local operation
Antenna	Internal or deported	
Input acquisition path	1 second minimum (configurable)	
Input registration path	1 second minimum (depending on the event)	
Local data storage (upon configuration)		183 days of instantaneous values stored every 5 minutes
		1 hour of instantaneous values stored to the second before the last stored fault
		1 hour of instantaneous values stored to the second after last stored fault
Local information backup		60000 values permanently stored and accessible in Bluetooth and 325 000 values saved as a file in case of remote communication failure
Operating conditions	Temperature	- 25°C to + 65°C (working) / - 25°C to + 65°C (storage) Below -20 ° C, the display legibility is not guaranteed
	Relative humidity	< 95% without condensation
Installation	ATEX and IECEx certification	Ⓜ II 2 G Ex ib IIB T3 Gb Tamb ≤ +65°C
	Protection class	IP66 / IK08
	Power supply	Internal battery or IS external batteries pack « long life » (191x125x90mm)
	Autonomy	> 10 years

C75084-GB-REV00-08/18



Headquarters and Manufacturing facility
 ZI la Limoise
 36100 Issoudun FRANCE
 Phone : +33 (0)2 54 03 99 49
 Fax : +33 (0)2 54 21 08 90
 Mail : commercial.issoudun.meci@eiffage.com



en.meci.clemessy.com

As Meci regularly improves its products to ever better respond to evolving market and regulatory requirements, it reserves the right to change any of the specifications of these products, and this without prior notice.